

SECTION 1

Columbia River to Oswald West State Park



SECTION 1 GAPS: CONNECTION STRATEGY (2011)

Necanicum River (1-1)

Hikers must leave beach trail at the Gearhart Ocean Recreation Area beach access point and cross the Necanicum River on Highway 101 and follow local roads into Seaside. The HWY 101 shoulder is wide and traffic on side streets is low speed and low volume.

Ecola Creek / Cannon Beach (1-2)

Rough terrain on the south side of Ecola Head forces the trail inland. The current route follows the park road and local streets and returns to the beach after crossing Ecola Creek in Cannon Beach.

SECTION 1 GAPS: IDENTIFIED 2017-18

Camp Rilea (1-X)

Periodic beach closers of the 3-mile beach adjacent to Camp Rilea for artillery training do not accommodate the needs of hikers. The beach is open on the hour for 15 minutes to allow vehicles to pass. OPRD and Camp Rilea are updating the 2015 agreement to include OCT users and others walking along the beach.

Indian Beach Trail, Ecola State Park (1-Y)

A landslide washed out a portion of the trail to Indian Beach in 2017. OPRD is working on a re-route to move the trail out of the landslide zone.

Hug Point (1-Z)

Rocky outcroppings, including Hug Point, are impassable at high tide. OCT hikers bypass these outcroppings by walking on the HWY 101 shoulder.

MAP LEGEND

- | | |
|-------------------------------|--------------------------------------|
| Oregon State Parks | Boundaries |
| State Park | Federal Land |
| Camping | County |
| Drinking Water | City Boundary |
| Restroom | |
| Oregon Coast Trail | Transportation |
| OCT on Trail/Sidewalk | Coast Highways |
| OCT on Road | Coast Roads |
| OCT on Beach | Oregon Coast Connector Transit Route |
| Gap | Oregon Coast Bike Route |
| Completed Gap | |
| In Progress Gap | Hydrology |
| Pt. Leave the Beach Trail | High Tide |
| Pt. Arrive at the Beach Trail | |

SECTION 2

Oswald West State Park to Cape Lookout State Park



SECTION 2 GAPS: CONNECTION STRATEGY (2011)

Oswald West to Manzanita (2-1)

There is no trail between Oswald West and Manzanita, and HWY 101 is missing a shoulder for most of this distance. Trail development is currently in progress. A new trail is expected to open in 2019.

Tillamook Bay (2-2)

Even with a ferry ride, OCT hikers must walk on HWY 101 for 2 miles. Without a ferry ride, the walk around Tillamook Bay is 20 miles long and portions of HWY 101 do not have a shoulder. This section of the OCT overlaps with the Salmonberry Trail.

Netarts Bay (2-3)

High tides and active slides mean the OCT follows the Three Capes Scenic Route around Netarts Bay. There is no shoulder on portions of the Three Capes route. There is no reservable ferry option currently at Netarts Landing.

SECTION 2 GAPS: IDENTIFIED 2017-18

Nehalem Bay (2-X)

A ferry across Nehalem Bay has been operating almost continually since 1929. Native Americans typically used boats to cross the bay, and helped European explorers navigate most of the rivers and bays along the coast pre-settlement. Currently Jetty Fishery operates a ferry from Nehalem Bay State Park across Nehalem Bay from 7am - 7pm in the summers (and during daylight hours year-round); rides can be arranged by calling the Fishery from the shore on the southern end of Nehalem Bay State Park. However, when shuttle services is not available (or OCT hikers do not know about the ferry option), hikers use the shoulder of HWY 101 around the bay.

MAP LEGEND

- Oregon State Parks

 - State Park
 - Camping
 - Drinking Water
 - Restroom
- Oregon Coast Trail

 - OCT on Trail/Sidewalk
 - OCT on Road
 - OCT on Beach
 - Gap
 - Completed Gap
 - In Progress Gap
 - Pt. Leave the Beach Trail
- Boundaries

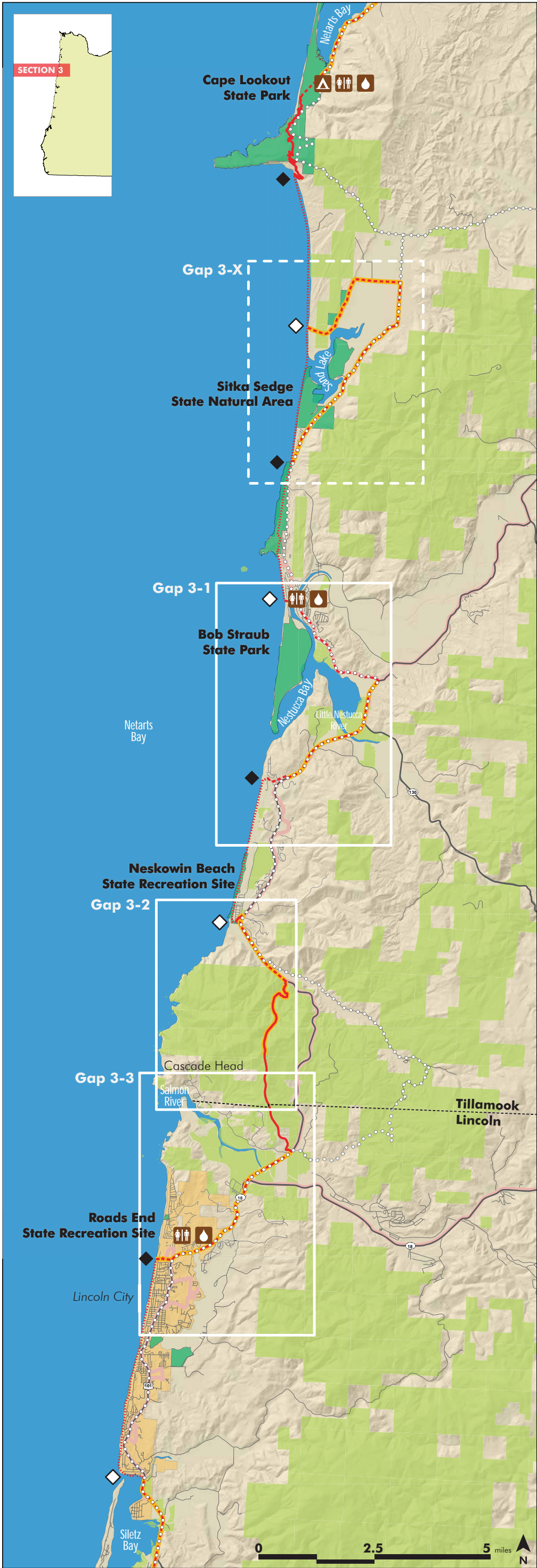
 - Federal Land
 - County
 - City Boundary
- Transportation

 - Coast Highways
 - Coast Roads
 - Oregon Coast Connector Transit Route
 - Oregon Coast Bike Route
- Hydrology

 - High Tide

SECTION 3

Cape Lookout State Park to Lincoln City



SECTION 3 GAPS: CONNECTION STRATEGY (2011)

Nestucca River (3-1)

Near Bob Straub State Park, hikers follow the Three Capes Scenic Route to HWY 101. A sidewalk exists along portions of the Three Capes routes, but other places do not even have a shoulder. Hikers use a bridge on HWY 101 to cross the Nestucca River and leave the highway at Winema Road. NOTE: Only the portion on HWY 101 was considered a “gap” in 2011. The Nestucca River Wildlife Refuge is located at the mouth of the Nestucca River and adjacent to HWY 101.

Cascade Head North (3-2)

From Neskowin State Recreation Area to Cascade Head was a 1-mile “gap” along HWY 101 in 2011. However, the Cascade Trail “North” has been closed for nearly a decade and the “gap” is currently 4 miles along HWY 101 (FSR 1861 is closed January 1 to July 15). A trails plan is currently underway for Cascade Head.

Salmon River, Cascade Head South (3-3)

From the trailhead on the south side of Cascade Head, the Salmon River Estuary is a barrier. Hikers cross the Salmon River on the shoulder of HWY 101 and follow local streets through Lincoln City back to the beach south. A trails plan for Cascade Head that includes trails through The Knoll, God’s Thumb, and High Meadow is underway.

SECTION 3 GAPS: IDENTIFIED 2017-18

Sand Lake (3-X)

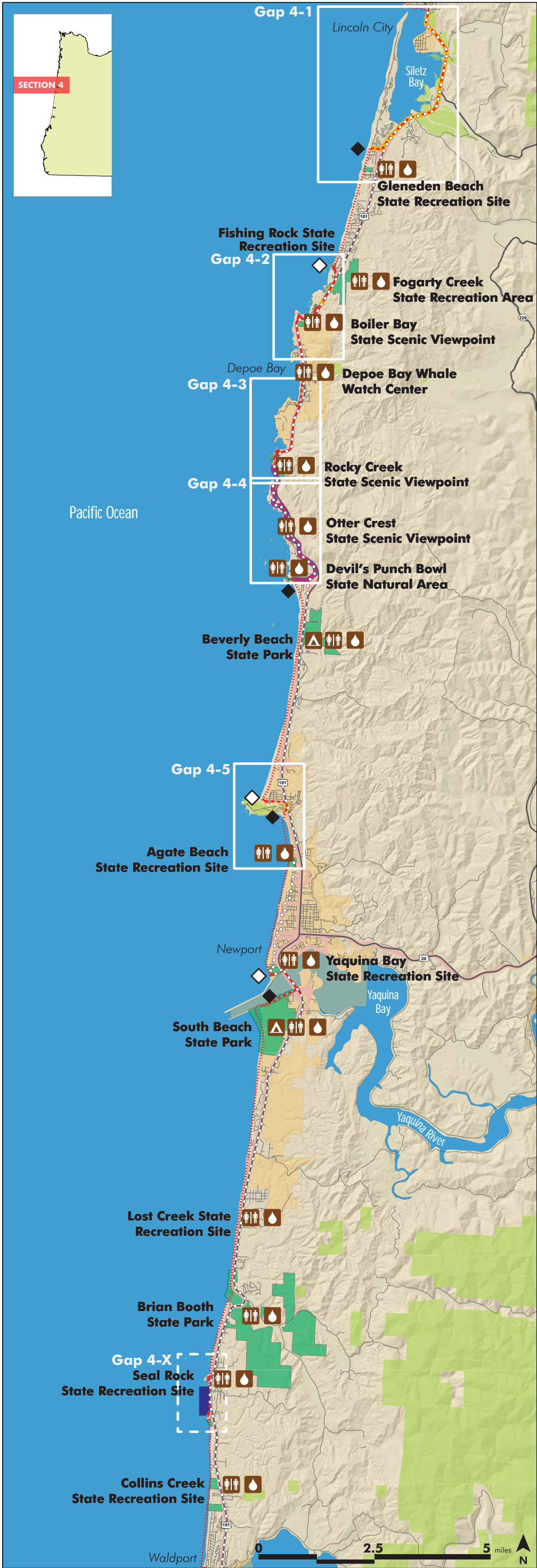
The mouth of Sand Lake can sometimes be forded at low tide during the summer. Otherwise, the route follows local roads back to Three Capes Scenic Route and returns to the beach at Sitka Sedge State Recreation Area. Plover habitat creates an additional 6 mile barrier for hikers with dogs during nesting season.

MAP LEGEND

- | | |
|-------------------------------|--------------------------------------|
| Oregon State Parks | Boundaries |
| State Park | Federal Land |
| Camping | County |
| Drinking Water | City Boundary |
| Restroom | |
| Oregon Coast Trail | Transportation |
| OCT on Trail/Sidewalk | Coast Highways |
| OCT on Road | Coast Roads |
| OCT on Beach | Oregon Coast Connector Transit Route |
| Gap | Oregon Coast Bike Route |
| Completed Gap | |
| In Progress Gap | Hydrology |
| Pt. Leave the Beach Trail | High Tide |
| Pt. Arrive at the Beach Trail | |

SECTION 4

Lincoln City to Waldport



SECTION 4 GAPS: CONNECTION STRATEGY (2011)

Siletz Bay (4-1)

Siletze Bay cannot be forded. Hikers follow HWY 101 to Gleneden Beach Loop Road. Older maps show the OCT following HWY 101 1 mile longer and missing the community of Gleneden Beach altogether.

Fogary Creek (4-2)

South of Fishing Rock State Recreation Site, OCT hikers follow a neighborhood street and return to HWY 101. Since 2011, most of this “gap” has been closed with construction of a trail, but a short section of HWY 101 walking remains just north of Boiler Bay State Scenic Viewpoint. South of Boiler Bay, trail users follow sidewalks through Depoe Bay.

Whale Cove (4-3)

Most of the “gap” identified in 2011 has been closed with construction of a trail, but hikers still walk on the shoulder of HWY 101 from Rocky Creek viewpoint to Otter Crest Loop Road.

Cape Foulweather (4-4)

Lincoln County and OPRD are currently implementing improvements along Otter Crest Loop Road that eliminate the need to hike on the road.

Yaquina Head (4-5)

Hikers leave the beach using any one of several neighborhood beach access points and follow NW 55th Street to HWY 101. This “gap” is an opportunity to develop a new trail through the Yaquina Head Outstanding Natural Area.

SECTION 4 GAPS: IDENTIFIED 2017-18

Seal Rock (4-X)

Seal Rock is a protected habitat area and hiking over the headland is prohibited. It may be possible to pass during periods of extreme low tide. Most hikes leave the beach using an informal access connection to HWY 101 and walk along the shoulder back to the Seal Rock State Recreation Site trails.

MAP LEGEND

- | | |
|---------------------------|--------------------------------------|
| Oregon State Parks | Boundaries |
| State Park | Federal Land |
| Camping | County |
| Drinking Water | City Boundary |
| Restroom | |
| Oregon Coast Trail | Transportation |
| OCT on Trail/Sidewalk | Coast Highways |
| OCT on Road | Coast Roads |
| OCT on Beach | Oregon Coast Connector Transit Route |
| Gap | Oregon Coast Bike Route |
| Completed Gap | |
| In Progress Gap | Hydrology |
| Pt. Leave the Beach Trail | High Tide |

SECTION 5

Waldport to Florence



SECTION 5 GAPS: CONNECTION STRATEGY (2011)

Alsea Bay (5-1)

The gap identified in 2011 is no longer a gap. Oregon Coast Trail signs will be updated in 2019. Maps show the route south on Bayshore Drive, a connection along the beach, and returning to sidewalks on the Alsea Bay Bridge at an existing wayside.

Cummins Creek (5-2)

South of Cummins Creek trailhead access road, hikers cross Cummins Creek on a bridge with a sidewalk and access the Neptune State Scenic Viewpoint, but return to walking on the shoulder for several miles. Sidewalks exist on an existing bridge over Bob Creek as well. Trail opportunities exist on property already owned and managed by OPRD and the Siuslaw National Forest.

Takotee Klootchman (5-3)

From Bob Creek to Carl Washburn State Park, hikers walk along HWY 101 and short segments of beach and trail walking. Beach access is dependent on tides. There are opportunities to develop a trail on properties that are already publicly owned.

Heceta Head (5-4)

After passing trails adjacent to the Heceta Head Lighthouse, trail users walk on HWY 101 through a tunnel and along the road where there is little to no road shoulder. There are opportunists to develop new trails on property owned and managed by OPRD and the Siuslaw National Forest east and west of HWY 101.

SECTION 5 GAPS: IDENTIFIED 2017-18

Alsea Bay South (5-X)

The beach at the mouth of the Alsea River in Waldport is often impassable below the sea wall during medium- and high-tide. Hikers and other pedestrians often walk along HWY 101 in an area with no shoulders and return to the beach at the Governor Patterson Memorial State Recreation Site.

Yachats South (5-Y)

Short sections of road walking remain on the south side of Yachats on neighborhood streets and along HWY 101 to connect to Amanda’s Trail. Local trail advocates are pursuing funding for trail improvements in this area.

MAP LEGEND

- | | |
|---------------------------|--------------------------------------|
| Oregon State Parks | Boundaries |
| State Park | Federal Land |
| Camping | County |
| Drinking Water | City Boundary |
| Restroom | |
| Oregon Coast Trail | Transportation |
| OCT on Trail/Sidewalk | Coast Highways |
| OCT on Road | Coast Roads |
| OCT on Beach | Oregon Coast Connector Transit Route |
| Gap | Oregon Coast Bike Route |
| Completed Gap | |
| In Progress Gap | Hydrology |
| Pt. Leave the Beach Trail | High Tide |

SECTION 6

Florence to North Bend



SECTION 6 GAPS: CONNECTION STRATEGY (2011)

Siuslaw River (6-1)

The Siuslaw River creates a barrier that cannot be forded. The current route follows low traffic and low speed surface streets from Siuslaw North Jetty Park to the Siuslaw River bridge on Hwy 101 and returns to the beach at the Oregon Dunes National Recreation Area via South Jetty Access Road.

Umpqua River (6-2)

Even with a ferry ride, OCT hikers must walk on HWY 101 for 2 miles. Without a ferry ride, the walk around Tillamook Bay is 20 miles long and portions of HWY 101 do not have a shoulder. This section of the OCT overlaps with the Salmonberry Trail.

The Umpqua River creates a barrier that cannot be forded. The current route follows low traffic surface streets to Hwy 101 near Gardiner, crosses Hwy 101 over the Umpqua River into Reedsport, remains on sidewalks along Hwy 101 through Reedsport, and continues along the highway shoulder to Winchester Bay before returning to the Oregon Dunes NRA. A portion of this gap overlaps with the planned Dean to Dunes multi-use path.

MAP LEGEND

- | | |
|-------------------------------|--------------------------------------|
| Oregon State Parks | Boundaries |
| State Park | Federal Land |
| Camping | County |
| Drinking Water | City Boundary |
| Restroom | |
| Oregon Coast Trail | Transportation |
| OCT on Trail/Sidewalk | Coast Highways |
| OCT on Road | Coast Roads |
| OCT on Beach | Oregon Coast Connector Transit Route |
| Gap | Oregon Coast Bike Route |
| Completed Gap | |
| In Progress Gap | Hydrology |
| Pt. Leave the Beach Trail | High Tide |
| Pt. Arrive at the Beach Trail | |

SECTION 7

North Bend to Bandon



SECTION 7 GAPS: CONNECTION STRATEGY (2011)

Coos Bay (7-1)

The Coos River creates a barrier north of North Bend. Hikers leave the Oregon Dunes NRA and follow the Horsefall Beach access roads to Hwy 101. Once in North Bend, OCT users can follow the Sawmill Trail through North Bend. Sidewalks have been added to the Cape Arago Highway.

Charleston (7-2)

The South Slough of the Coos River is a barrier north of Charleston. A shared use path exists on the east side of Cape Arago Highway, but ends just north of the bridge over South Slough. Through hikers continue south along Seven Devils Road to access the beach.

Cape Arago (7-3)

Bluffs and private properties prevent the OCT from continuing south of Cape Arago State Park. There is a network of logging roads that could be used to develop a trail if easements could be negotiated or property purchases were made. For now the trails and campgrounds serve as a side trip for those through hiking the OCT.

Coquille River (7-4)

North of Bandon, the Coquille River creates a gap. The current route leaves the beach at Bullards Beach State Park and hikers follow trails and park roads to connect to the Hwy 101 bridge over the Coquille River. Riverside Drive leads hikers into Bandon and connects back to the beach.

SECTION 7 GAPS: IDENTIFIED 2017-18

Seven Devils Road (7-X)

Hikers following Seven Devils Road walk in the road. There are no sidewalks and no shoulder and the road is very windy and steep in places. The route is not signed.

Five Mile Point (7-Y)

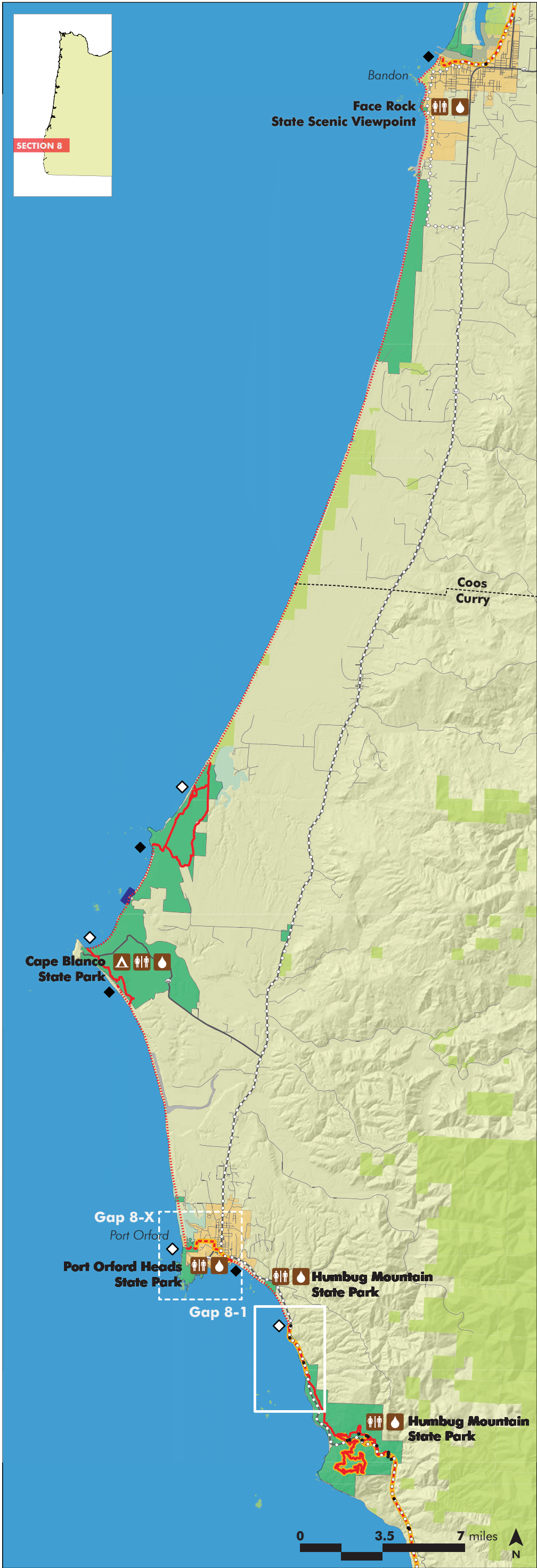
Five Mile Point is impassable at high tide. An existing easement held by OPRD is no longer a viable connection and OPRD can not legally access the easement to maintain the trail. Conversations are taking place with property owners, but for the time being, the high tide connection is closed and hikers must bypass File Mile Point on local streets.

MAP LEGEND

- | | |
|-------------------------------|--------------------------------------|
| Oregon State Parks | Boundaries |
| State Park | Federal Land |
| Camping | County |
| Drinking Water | City Boundary |
| Restroom | |
| Oregon Coast Trail | Transportation |
| OCT on Trail/Sidewalk | Coast Highways |
| OCT on Road | Coast Roads |
| OCT on Beach | Oregon Coast Connector Transit Route |
| Gap | Oregon Coast Bike Route |
| Completed Gap | |
| In Progress Gap | |
| Pt. Leave the Beach Trail | Hydrology |
| Pt. Arrive at the Beach Trail | High Tide |

SECTION 8

Bandon to Humbug Mountain State Park



SECTION 8 GAPS: CONNECTION STRATEGY (2011)

Rocky Point (8-1)

Rocky Point can be crossed over rocks depending on tides, but south of Rocky Point, trail users must walk on the shoulder of Hwy 101 for a short distance before crossing Hwy 101 to access the shared use trail through Humbug Mountain State Park.

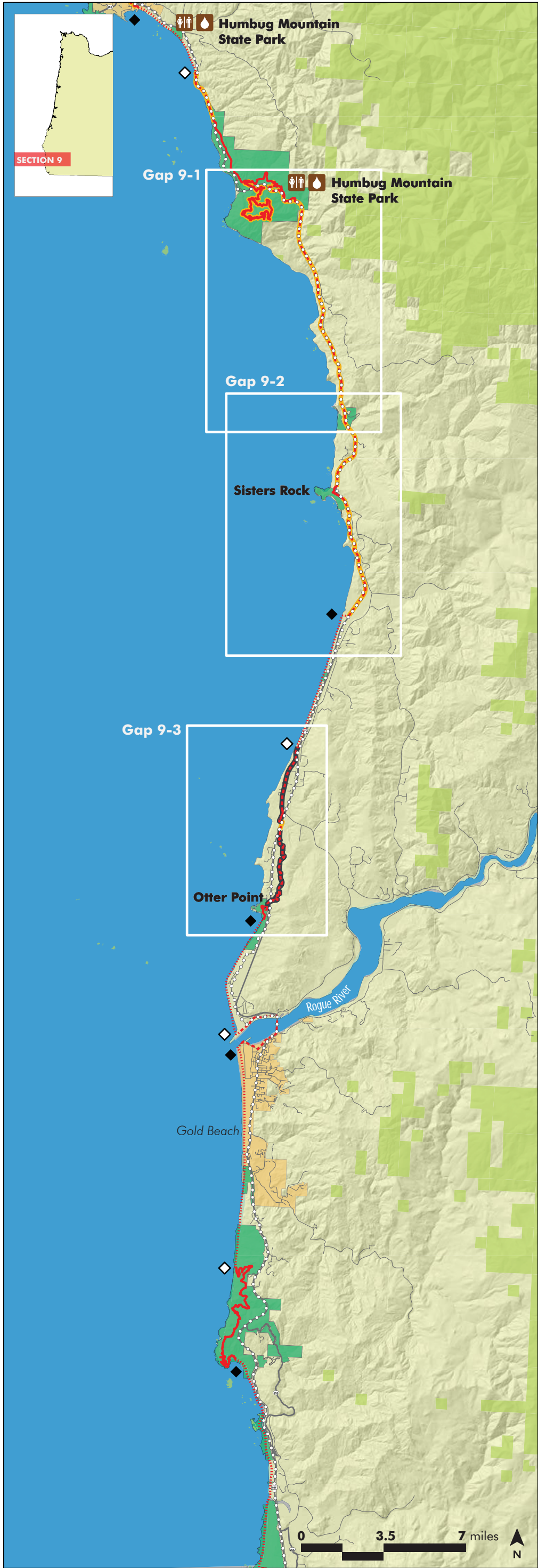
SECTION 2 GAPS: IDENTIFIED 2017-18

Port Orford (8-X)

Portions of HWY 101 north and south of Port Orford are missing sidealks and OCT hikers walk on the shoulder of HWY 101. From the beach, hikers follow local streets to HWY 101 through Port Orford.

MAP LEGEND

- | | |
|-------------------------------|--------------------------------------|
| Oregon State Parks | Boundaries |
| State Park | Federal Land |
| Camping | County |
| Drinking Water | City Boundary |
| Restroom | |
| Oregon Coast Trail | Transportation |
| OCT on Trail/Sidewalk | Coast Highways |
| OCT on Road | Coast Roads |
| OCT on Beach | Oregon Coast Connector Transit Route |
| Gap | Oregon Coast Bike Route |
| Completed Gap | |
| In Progress Gap | Hydrology |
| Pt. Leave the Beach Trail | High Tide |
| Pt. Arrive at the Beach Trail | |



SECTION 9

There are a total of three connection issues on this section of the Oregon Coast Trail.

Humbug Mountain (9-1)

Humbug Mountain creates a barrier. There may be opportunities to develop the trail within Hwy 101 right-of-way or to explore opportunities to utilize the Old Coast Highway. The south side of Humbug Mountain is currently privately owned, and the Humbug Mountain Trail does not continue south.

Sisters Rock Connection (9-2)

South of Humbug Mountain State Park rocky cliffs and private properties create a barrier. Existing trails allow hikers to leave Hwy 101, briefly, at Sisters Rock. There may be opportunities to develop a trail on the headlands if property ownerships can be negotiated; there is also potential to improve portions of the Old Coast Highway.

Nesika Beach (9-3)

South of Nesika Beach rocky headlands and private properties create a barrier until the Otter Point State Recreation Area. The 2011 Connection Strategy states that the trail follows Old Coast Road south of the Geisel Monument, but current maps tell users to follow the shoulder of HWY 101 south to Otter Point. Following Old Coast Road requires OCT users cross HWY 101 twice. Through Nesika Beach, north of Geisel, OCT hikers leave the beach and follow Nesika Road through Nesika Beach to a short trail that connects through the Geisel Monument site. There are no sidewalks on Nesika Road.

MAP LEGEND

- Oregon State Parks**

State Park

Camping

Drinking Water

Restroom
- Oregon Coast Trail**

OCT on Trail/Sidewalk

OCT on Road

OCT on Beach

Gap

Completed Gap

In Progress Gap

Pt. Leave the Beach Trail

Pt. Arrive at the Beach Trail
- Boundaries**

Federal Land

County

City Boundary
- Transportation**

Coast Highways

Coast Roads

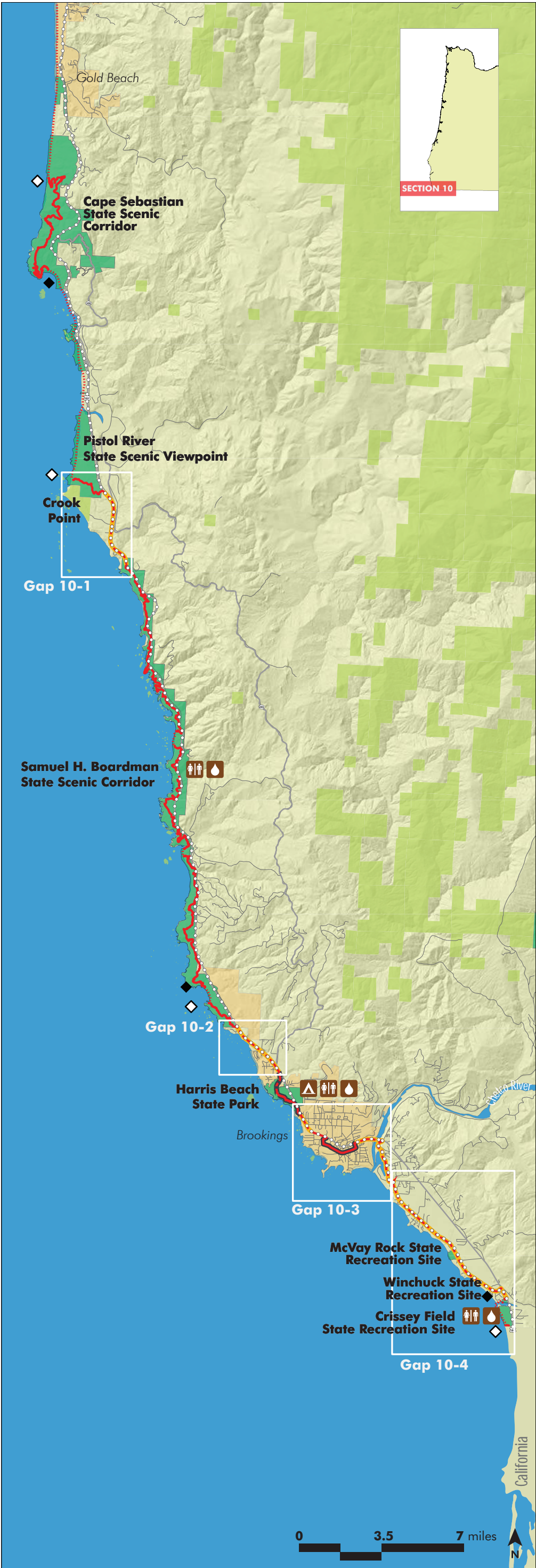
Oregon Coast Connector Transit Route

Oregon Coast Bike Route
- Hydrology**

High Tide

SECTION 10

Pistol River State Scenic Viewpoint to California



SECTION 10

There are a total of four connection issues on this section of the Oregon Coast Trail.

Crook Point (10-1)

Crook point creates a barrier south of the Pistol River State Scenic Viewpoint. The beach connection is challenging to maintain because of the sandy soils and grasses. There is a potential connection through federally-owned property on Crook Point.

Shy Creek (10-2)

Beach access between Sam Boardman SSA and Harris Beach State Park is limited by rocky cliffs, tides, and private residences. A bike path connects Harris Beach State Park to nearby Brookings, but it ends a few miles north of town.

Chetco River (10-3)

South of Harris Beach State Park, users follow in Hwy 101 until south of the Chetco Bridge where they follow Lower Harbor Road. Some portions of this connection have sidewalks; other portions utilize lower speed roads and the highway shoulder.

Winchuck River (10-4)

Rocky cliffs south of the harbor at the Chetco River create a barrier. The current route follows Oceanview Drive South to Hwy 101 and returns to the beach at the Winchuck River. Depending on tides, OCT users may be able to avoid this gap by fording the Winchuck River.

MAP LEGEND

Oregon State Parks

State Park

Camping

Drinking Water

Restroom

Oregon Coast Trail

OCT on Trail/Sidewalk

OCT on Road

OCT on Beach

Gap

Completed Gap

In Progress Gap

Pt. Leave the Beach Trail

Pt. Arrive at the Beach Trail

Boundaries

Federal Land

County

City Boundary

Transportation

Coast Highways

Coast Roads

Oregon Coast Connector Transit Route

Oregon Coast Bike Route

Hydrology

High Tide